

# AKGUL GROUP

**LIGHT STEEL STRUCTURES**

[www.akgul-group.com](http://www.akgul-group.com)



## LIGHT STEEL STRUCTURES

The buildings in production system is seamless panel frame is created from.



## LIGHT STEEL STRUCTURES LUXURY

Used in the production of all the materials rollformer machine ,taken from electrostatic galvanized C and U- section steel structure manufacture of 80kg/m<sup>2</sup> snow load,90 km/ h hour wind speed 1.degree of seismic conditions,and 3. climate region on the basic of production will.

Wall panels dashboard frame is done in a flood.

The walls of outer side 11mm thick OSB plate ,the inner side of 12mm thick gypsum sheet pan covered with. Wet areas (bathroom WC) green gypsum pan used.



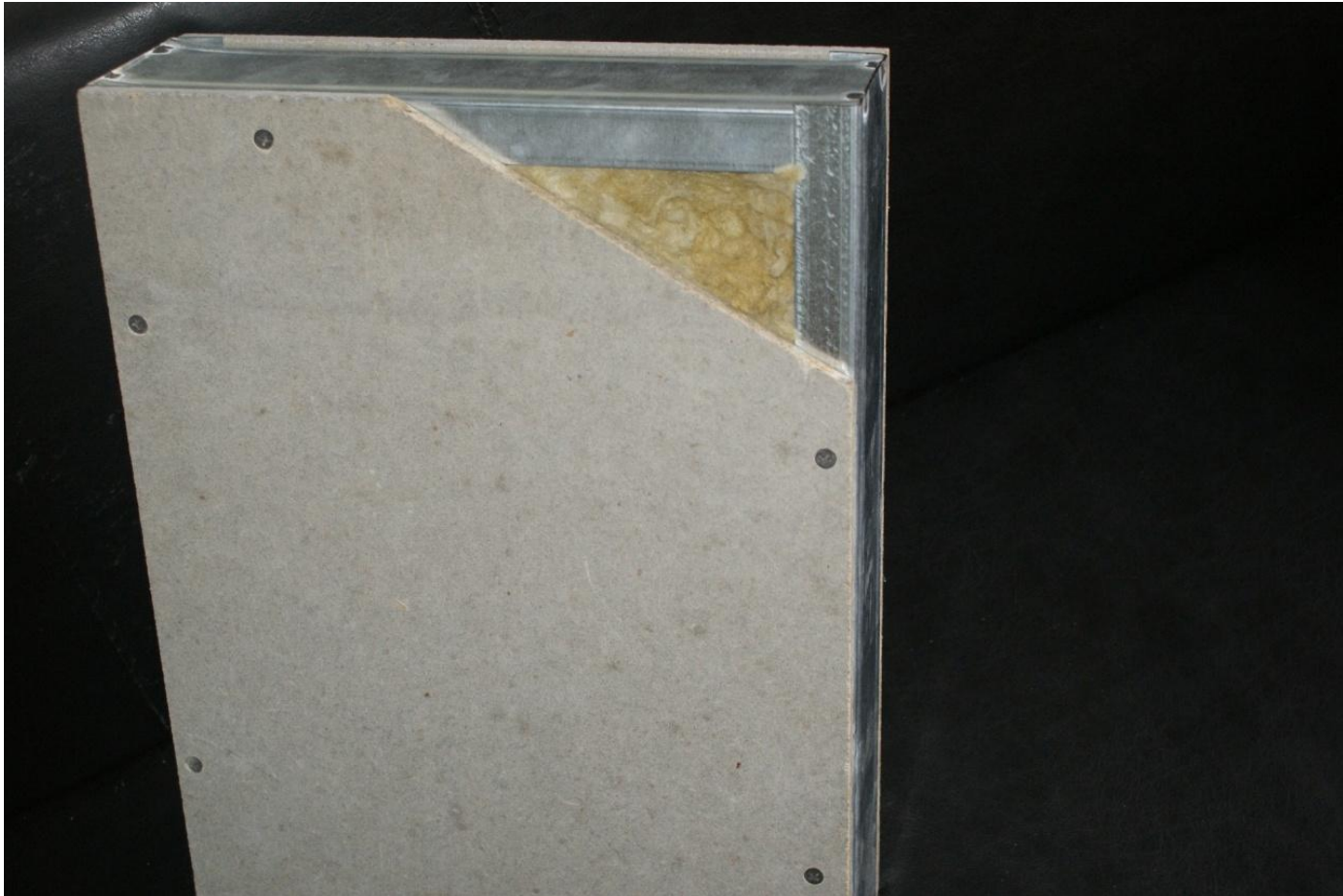


## LIGHT STEEL STRUCTURES LUXURY





## LIGHT STEEL STRUCTURES LUXURY



## LIGHT STEEL STRUCTURES LUXURY

For heat insulation (14kg/m<sup>3</sup> )80mm thick glass wool is used.

Thermal insulation coefficient K: 0,64 kcal /m<sup>2</sup> hc.

A wall thickness from 10cm-15 cm ,on request and according to the climatic conditions are made.



## LIGHT STEEL STRUCTURES LUXURY





## LIGHT STEEL STRUCTURES LUXURY

Window to the desired extend and in ways that can be done .

Window joinery is rebated from the outside is on the in side moldings are placed.

Glass 4+9+4mm tempered glass in used.



## LIGHT STEEL STRUCTURES LUXURY

Exterior doors, steel door, dimension of 900\*2000 interior doors 800\*2000 size white- bellied american bead door will be done .

Door of the outer cylindrical door lock, interior door locks hotel locks style will be.



## LIGHT STEEL STRUCTURES LUXURY

Roof scissors galvanized steel, which is made of special profile  
Throughout in the building, each 120 cm of a galvanized steel scissors  
are.

Columns of galvanized steel profile with a special twist are made.

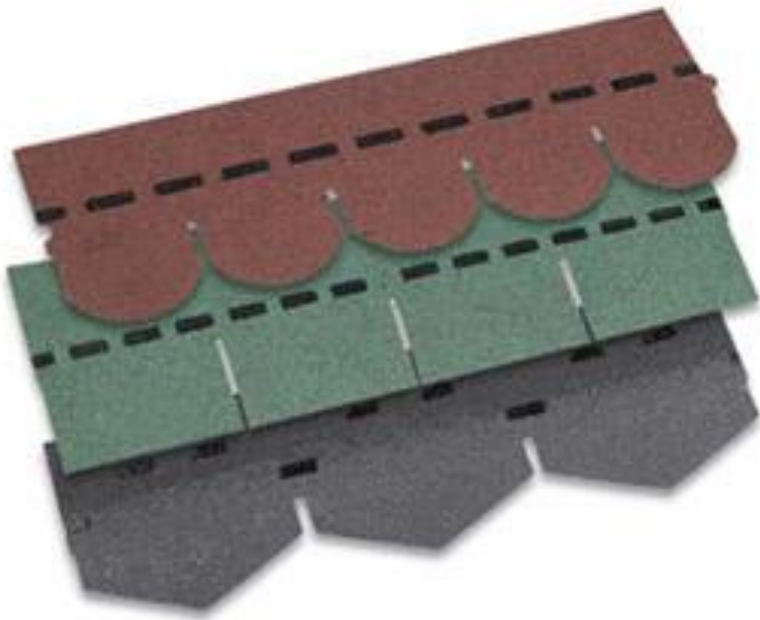
Lofters of galvanized steel with a special twist are made.

Roof –metal tile, and covered with shingle.

The two –storey building in dec floor tiles for special twisted C and  
U –cross –section of galvanized steel chassis are made.



## LIGHT STEEL STRUCTURES LUXURY



## LIGHT STEEL STRUCTURES LUXURY

The frimon 16 mm thick shall be laid in cement –bonded particle board.

Two storey buildings with a special twist hair from ,stairs digits will be done and cover 16 mm thick cement board with covered.

The links is provided with a bolt and nut .Repeatedly disassembled and can be established.



## LIGHT STEEL STRUCTURES LUXURY







## LIGHT STEEL STRUCTURES LUXURY

The ceiling panels are 12mm thick gypsum board is used .

Ceiling insulation 80mm thick glass wool are used.

Dry wall joint tape joints by pulling gypsum plaster is applied.

Galvanized sheet metals is bent lovers on 11 mm OSB sheet ,3mm membrane and shingle application.

The eaves of the roof the building 40cm.

The building to the front side of the head with scissors internal ventilation grille will be used.

PVC rain gutters and descents are installed.

## LIGHT STEEL STRUCTURES LUXURY

Exterior walls OSB siding on the application is made.

Interior walls are plaster application made on whether the desired color is painted with satin paint.





## LIGHT STEEL STRUCTURES LUXURY

Electrical installation under plastering is done .

For in-wall installation in the cable duct will be used.

The building fireproof cable is installation cables (halogen free ) is used.

Switch and outlet are mounted.

Electric panel and meter over whelming.



## LIGHT STEEL STRUCTURES

Clean PVC plumbing pipe with under the plaster.

Fittings and armatures instead of installation without delivery.

Water meter is not installed.



## LIGHT STEEL STRUCTURES LUXURY



## LIGHT STEEL STRUCTURES LUXURY





## BEFORE INSTALLATION WORK

Sub-soil structure  
and activities



## BEFORE INSTALLATION WORK

Excavation and  
concrete pouring  
activities



## PRODUCTION WORK



## PRODUCTION WORK





## PRODUCTION WORK



## INSTALLATION WORK





## INSTALLATION WORK





## INSTALLATION WORK





## INSTALLATION WORK



## INSTALLATION WORK





## INSTALLATION WORK



## INSTALLATION WORK





## INSTALLATION WORK



## INSTALLATION WORK





## INSTALLATION WORK



## INSTALLATION WORK





## INSTALLATION WORK



## INSTALLATION WORK





## INSTALLATION WORK



## INSTALLATION WORK





## AFTER INSTALLATION WORK

Paint and  
flooring tiles



## AFTER INSTALLATION WORK

Installation  
activities



## LIGHT STEEL STRUCTURES LUXURY





## LIGHT STEEL STRUCTURES LUXURY



## LIGHT STEEL STRUCTURES LUXURY





## LIGHT STEEL STRUCTURES LUXURY



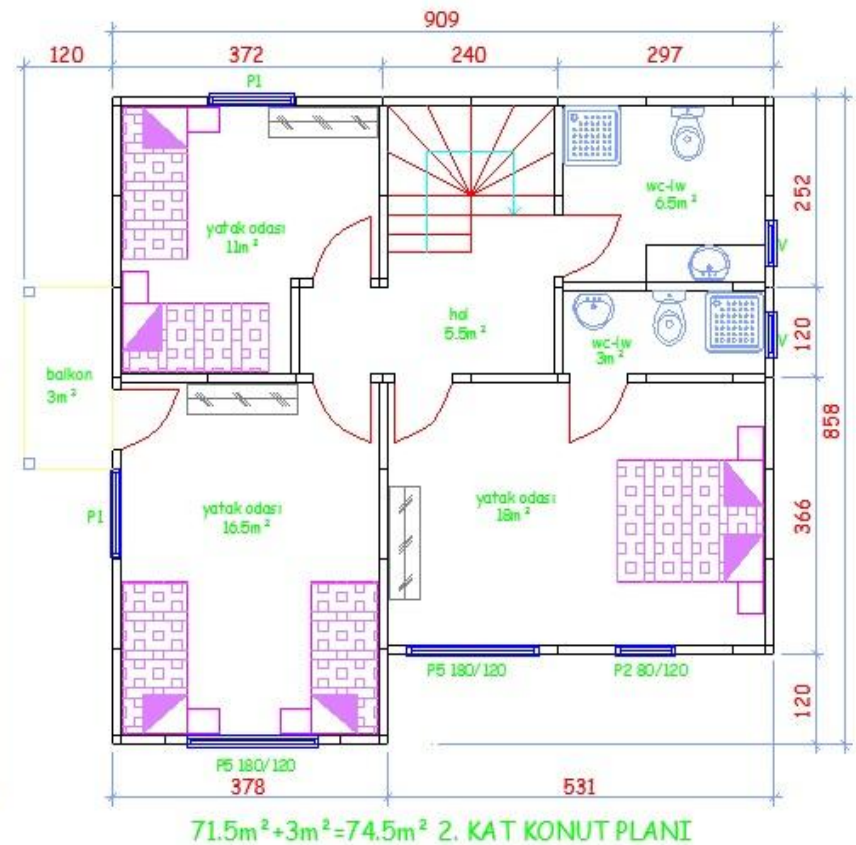
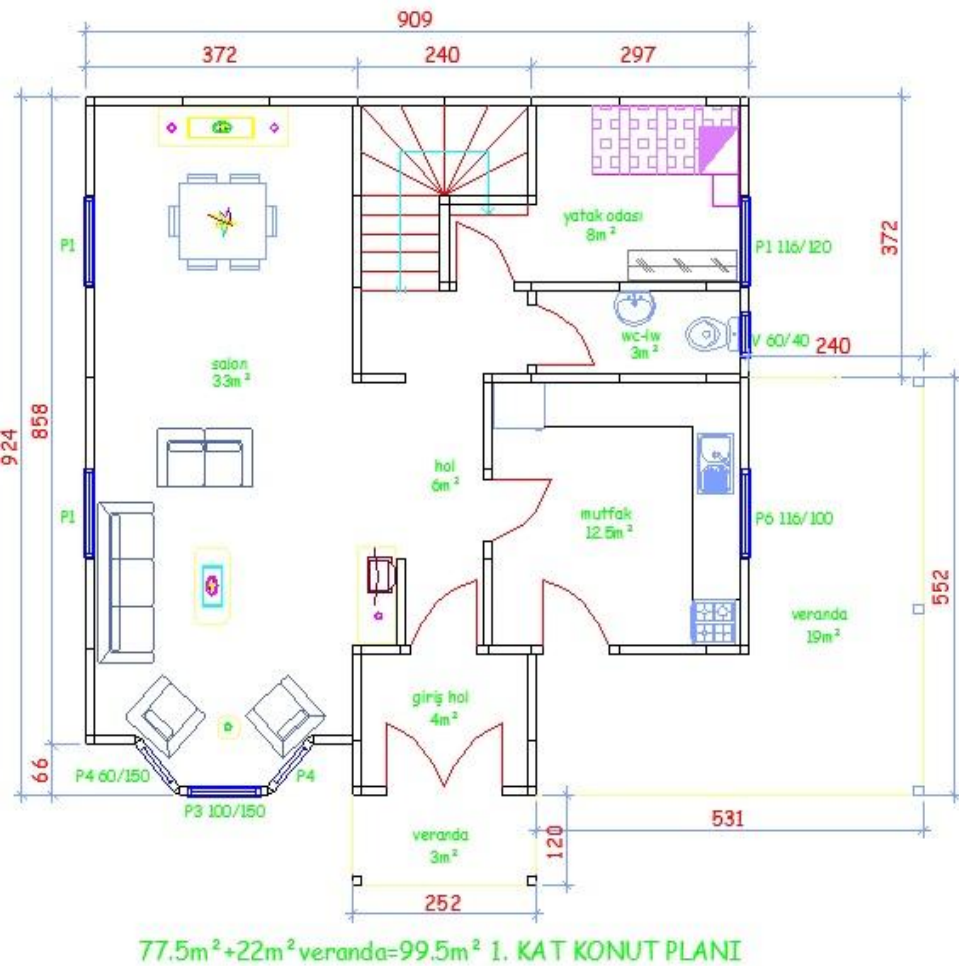


## LIGHT STEEL STRUCTURES LUXURY



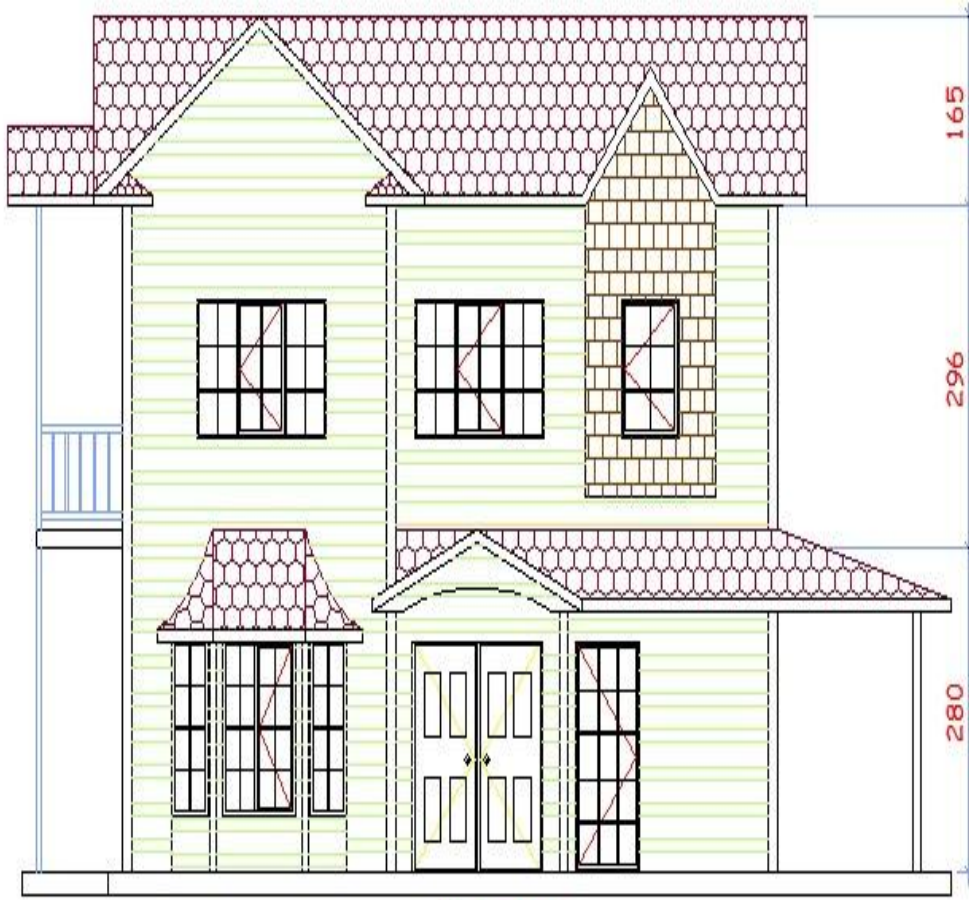
## LIGHT STEEL STRUCTURES LUXURY







## LİGT STEEL STRUCTURES LUXURY



ÖN CEPHE



SOL YAN CEPHE

## INTERIOR PICTURES



## INTERIOR PICTURES





## INTERIOR PICTURES



## INTERIOR PICTURES



## INTERIOR PICTURES





## INTERIOR PICTURES



## INTERIOR PICTURES



## INTERIOR PICTURES

